

# AQ VOC NEW!



## Portable Handheld VOC Monitor

Accurate VOC Monitoring & Real-Time Data-Logging for Air Quality Analysis in Industrial Safety, Environmental, Laboratories and other IAQ Applications

### Dynamic PID VOC Sensor Technology

- 0 - 20,000 PPB
- 0 - 200 PPM

### VOC in ppb/ppm or $\mu\text{g}/\text{m}^3/\text{mg}/\text{m}^3$

### UPGRADEABLE:

(Add UP TO 2 More Gas Sensors)

### REAL-TIME Continuous Data-Logging

### Active Internal Sampling Pump

### Large Internal Memory (2000)

### PC Software & USB Included

### Li-Ion Rechargeable Battery

### Barometric Air Pressure

### Protective Magnetic Rubber Boot

### Optional Wireless Printer

### Optional Handheld Probe

### MADE IN USA



 Bluetooth®

VOC

% RH

Temp

Barometric  
Pressure

Formaldehyde

CO<sub>2</sub>

O<sub>2</sub>

CO

NO<sub>2</sub>

H<sub>2</sub>S

SO<sub>2</sub>

NO

“Built with Quality in Mind”



 Real-time Data Logging for  
Graphs, Data Review, IAQ reports

 Wireless Communications with  
Computer & Remote Printer

 Light Weight, Durable,  
Handheld Design

**E Instruments International**

**www.E-Inst.com**

P: 215-750-1212 F: 215-750-1399 A: 402 Middletown Blvd, Ste 216 Langhorne, PA 19047

# AQ VOC



## Specifications

Parameter	Sensor	Range	Res.	Accuracy
<b>Low Range VOC</b> OR <b>High Range VOC</b>	PID	0 - 20 ppm (0 - 46 µg/m <sup>3</sup> )	1 ppb (2.3 µg/m <sup>3</sup> )	10% rdg. ± 20 ppb
	PID	0 - 200 ppm (0 - 460 mg/m <sup>3</sup> )	10 ppb (23 µg/m <sup>3</sup> )	10% rdg. ± 50 ppb
<b>Relative Humidity</b>	TFC	5 - 95% RH	0.1% RH	± 2% RH
<b>Ambient Temp.</b>	Pt100	-40 - 257°F (-40 - 125°C)	0.1°C/F	± 0.4°C (0 - 60°C)
<b>Barometric Pressure</b>	Solid State	260 - 1260 mbar	1 mbar	± 2 mbar
<b>Electromagnetic Compatibility</b>	EN 61326-1, Portable Equipment			



VOC

## AQ VOC ORDERING CODE

Part #: VOC- \_\_\_\_ - \_\_\_\_ - \_\_\_\_

Example: Part #: VOC - 1 - F - C2 = Low Range VOC, CH<sub>2</sub>O, CO<sub>2</sub>

### ALL AQ VOC Kits Include:

- Temperature, % Relative Humidity
- Barometric Pressure
- PC Software & USB Cable
- REAL-TIME** Continuous Datalogging
- Bluetooth Connectivity
- Protective Carrying Case
- Continuous Active Internal Sampling Pump
- Operating Manual & Quick Reference Guide
- Li-Ion Battery & AC Charger
- Factory Calibration Certificate

CO  
O<sub>2</sub>  
NO<sub>2</sub>  
CO<sub>2</sub>  
SO<sub>2</sub>  
% RH  
H<sub>2</sub>S  
CH<sub>2</sub>O

### Select Your VOC Range:

Parameter	Sensor	Range
<b>V1 - Low Range VOC</b>	PID	0 - 20 ppm (0 - 46 g/µm <sup>3</sup> )
<b>V2 - High Range VOC</b>	PID	0 - 200 ppm (0 - 460 mg/m <sup>3</sup> )

### Optional Gas Sensor Upgrades (Choose UP To ANY 2)

<b>C2 - Carbon Dioxide (CO<sub>2</sub>)*</b>	NDIR	0 - 5,000 ppm	1 ppm	± 2% rdg. ± 10 ppm
<b>C - Carbon Monoxide (CO)*</b>	EC**	0 - 200 ppm	0.1 ppm	± 1 ppm rdg. ± 0.2 ppm
<b>F - Formaldehyde (CH<sub>2</sub>O)***</b>	EC**	0 - 10 ppm	1 ppb	2% ± 30 ppb
<b>H - Hydrogen Sulfide (H<sub>2</sub>S)*</b>	EC**	0 - 100 ppm	1 ppm	± 4% of rdg. ± 0.5 ppm
<b>N - Nitrogen Dioxide (NO<sub>2</sub>)*</b>	EC**	0 - 20 ppm	0.1 ppm	± 0.5 ppm of rdg.
<b>O - Oxygen (O<sub>2</sub>)</b>	EC**	0 - 25%	0.1%	± 0.1% vol
<b>S - Sulfur Dioxide (SO<sub>2</sub>)*</b>	EC**	0 - 20 ppm	0.1 ppm	± 0.5 ppm of rdg.
<b>X - Nitric Oxide (NO)*</b>	EC**	0 - 250 ppm	0.1 ppm	± 2 ppm of rdg.

\* Other Ranges are Available Upon Request    \*\* Electrochemical    \*\*\* Accuracy Based on Laboratory Conditions

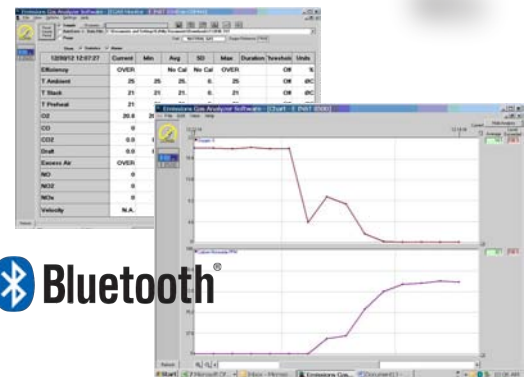
### Optional Accessories



Wireless Bluetooth™  
Printer  
(EE900P)



Sampling Probe  
(E85AACSF13)



AQ Gas® Real-Time  
Datalogging Software

### Distributed By:

**OneTemp**<sup>pty ltd</sup>  
MEASURE | CONTROL | RECORD  
www.onetemp.com.au  
1300 768 887



**E Instruments International**

**www.E-Inst.com**

P: 215-750-1212 F: 215-750-1399 A: 402 Middletown Blvd, Ste 216 Langhorne, PA 19047