

WDT-DW

Humidity Wet & Dry Tank Assembly.

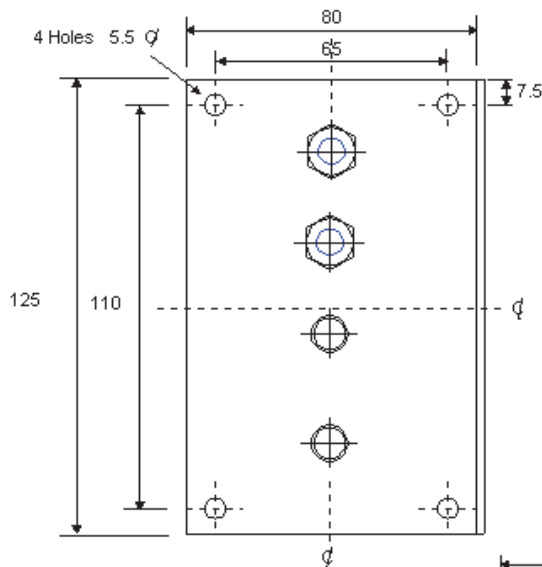
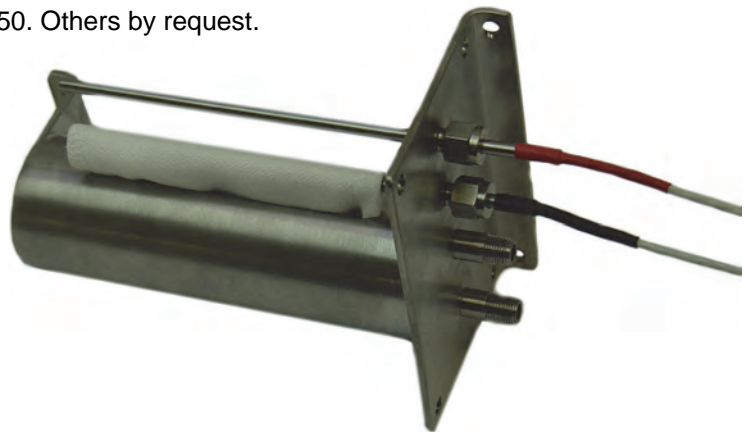
The WDT-DW has been developed specifically to meet the requirements for Wet & Dry Humidity Tank installations.

The WDT-DW would normally be wired to a **IN-HWD** (rev 2) Humidity and Temperature Indicator/Transmitter (or similar) with two 4~20mA outputs representing 0~100% RH plus 0~100°C.

Because the WDT-DW is made to the DIN standard with Band 5 Pt100 sensors, the accuracy of the system is more reliant on the wet and dry bulb transmitter.

Ordering Information.

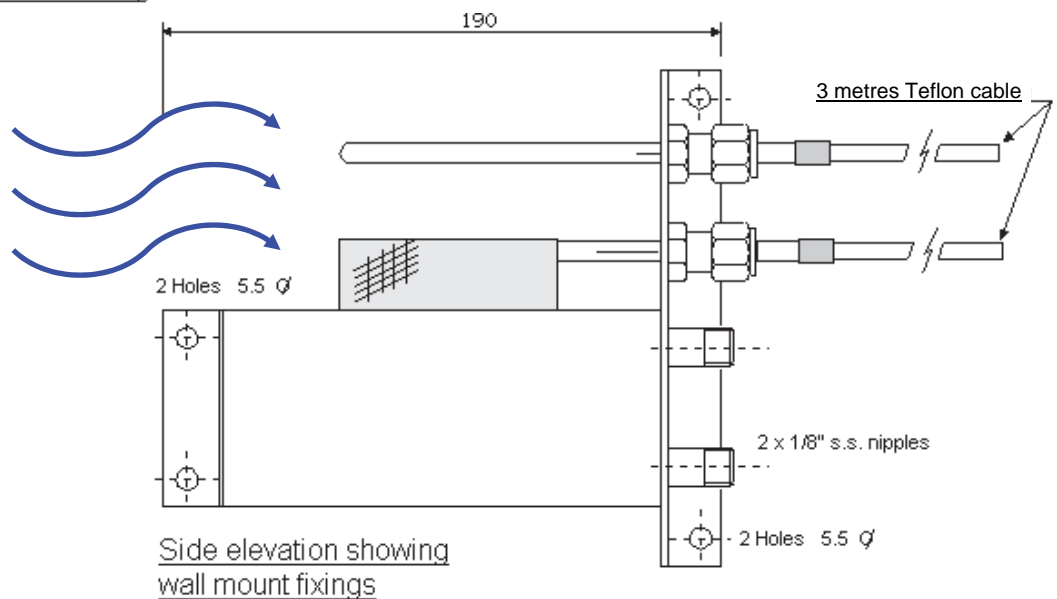
- WDT-DW** Sensors; RTD, Pt100, Band 5. 4.7ø x 150. Others by request.
 Fill port; 1/8" BSP nipple.
 Overflow port; 1/8" BSP nipple.
 Mount; Wall or duct mount.
 Cable; 3 metres.
- WDT-WICK** Constructed of 316 stainless steel.
 Spare wick for wet bulb sensor



The ASTM standards for measuring humidity with wet and dry bulb temperatures, stipulate that the flow of air over both the wet and dry bulbs must be a forced draught of 3 to 10m/s. Air flow should be unobstructed and towards the sensor tips to avoid any unwanted cooling on the dry bulb.

End elevation showing duct mount fixings (cutout 96 x 52mm)

Recommended Air Flow



Side elevation showing wall mount fixings

Product Liability. This information describes our products. It does not constitute guaranteed properties and is not intended to affirm the suitability of a product for a particular application. Due to ongoing research and development, designs, specifications, and documentation are subject to change without notification. Regrettably, omissions and exceptions cannot be completely ruled out. No liability will be accepted for errors, omissions or amendments to this specification. Technical data are always specified by their average values and are based on Standard Calibration Units at 25C, unless otherwise specified. Each product is subject to the 'Conditions of Sale'.
Warning: These products are not designed for use in, and should not be used for patient connected applications. In any critical installation an independent fail-safe back-up system must always be implemented.

Intech INSTRUMENTS LTD
www.intech.co.nz
 Christchurch Ph: +64 3 343 0646
 Auckland Ph: 09 827 1930
 Email: sales@intech.co.nz