

## Dry Block Calibrators

### Wide Temperature Range

Calsys -15/110 offer a wide temperature range from -15 °C to 110 °C

### Lightweight, portable

The Calsys -15/110 block is ideal for Industrial/ Laboratory field use. It only weighs about 11 kg, and it is small enough to carry around

### Speed

The Calsys -15/110 extremely quick to reach various temperatures, i.e. it Heats down to -15 °C in 25 minutes and heats up room temp to +110 °C in 10 minutes. This saves time and increases productivity

### Accuracy and performance

The Calsys -15/110 is an easily portable unit that also provides excellent calibration accuracy with stability  $\pm 0.07$  °C at 110°C.

### Accredited calibration

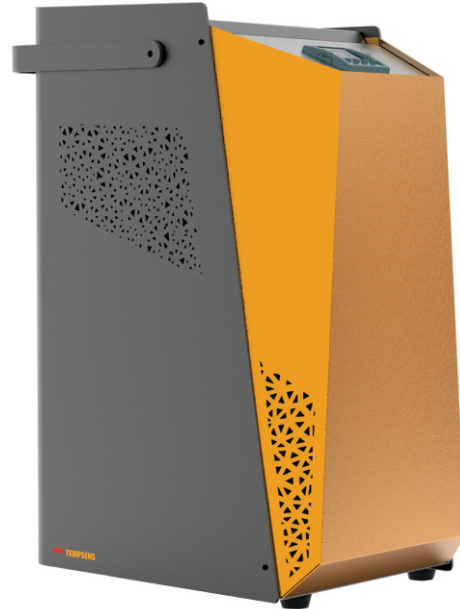
Each Calsys -15/110 is delivered with an accredited calibration certificate.

### Computer Interface

The communication port(RS-232/USB) enables communication with selected Calsys -15/110 calibrators for automation calibration and documentation thus it made documentation easy.

## Calsys -15/110

Portable, Lightweight, highly accurate low temperature Calibrator for Industrial/ Laboratory field use



Calsys -15/110 offers easy to use portable low temperature calibrator with temperature range from -15 to 110°C. It is a highly stable standard furnace for calibrating RTD. This calibrator can be used on site for high temperature calibration and also find application in aerospace, oil gas petrochemical, pharmaceutical industry, electric power, automotive and material process industry. The comparison volume is a metallic block of special material, which has a diameter of 24mm and 120mm long. Low temperature dry block furnace based on thermoelectric cooling circuitry. This model provides special design isothermal enclosure which can calibrate sensor against the calibrator. Temperature of the calibrator is set and controlled by a self tuned PID controller with automatic super fine adjustment. Our newly designed Calsys -15/110 model offers better esthetic design and performance wise upgraded to next level.

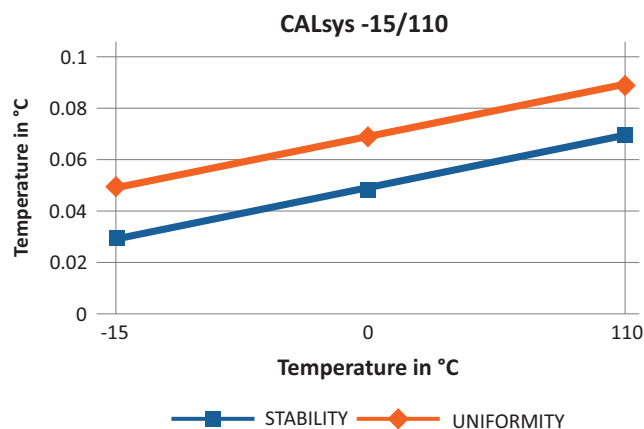
With the Tempsens make Compact Temperature Calibrator, you have chosen an extremely effective instrument which we hope will live up to all your expectations. This is a fast, timesaving, and reliable true industrial temperature calibrator designed for on-site use.

During the past several years, we have acquired extensive knowledge of industrial temperature calibration. This expertise is reflected in our products which are all designed for daily use in an industrial environment.

## SPECIFICATIONS

Temperature range	-15 °C to 110 °C
Accuracy	±0.5 °C
Stability	±0.03°C at -15°C
	±0.05°C at 0°C
	±0.07°C at 110°C
Radial uniformity	±0.05°C at -15°C
	±0.07°C at 0°C
	±0.09°C at 110°C
Loading effect (with a 6.35 mm reference probe and three 6.35 mm probes)	0.04°C
Hysteresis	0.02 °C
Immersion depth	120 mm
Insert OD dimensions	24 mm
Method of Control	Self tuned PID controller
Heating time	10 Min
Cooling time	25 Min ( 110 °C to -15°C)
Resolution	0.1 °C
Display	LCD, °C or °F user-selectable
Size (H x W x D)	380(H) x 170(W) x 188(D) mm
Weight	11Kg
Power requirements	230 VAC, 500 W(50 Hz)
Computer interface	RS - 232
Calibration	Accredited calibration certificate provided
Environmental operating conditions	0 °C to 40 °C, 0 % to 90 % RH (non-condensing)
Specifications valid in environmental conditions	13°C ... 33°C

## Graphical Representation

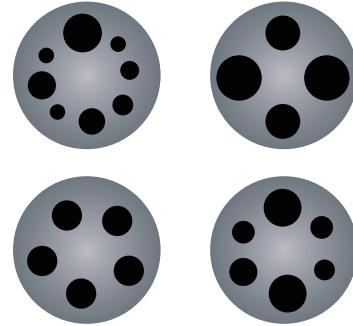


## ACCESSORIES

### Inserts for Calsys -15/110 models

Inserts for Calsys -15/110 are made of aluminum. All specifications on hole size based on outer diameter of the sensor under test. We also offer customized hole size based on Customer requirements.

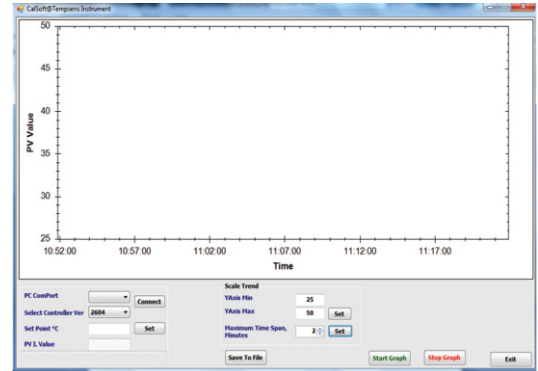
Inserts	Description
Ci1	Multihole, 4 x 6.5 mm
Ci2	Multihole, 6 mm, 8 mm
Ci3	Multihole, 2x3 mm/2x4 mm, 6 mm
Ci4	Multihole, 2x3 mm, 1x4 mm
Ci5	Multihole, 8 x 2 mm
CI6	Special (Customized)



Customized Equalizing Block....Part No. EQ1

### SOFTWARE

1	Date	Time	PV Value
2	6/22/2015	4:26:40 PM	304.1
3	6/22/2015	4:26:45 PM	303.4
4	6/22/2015	4:26:50 PM	302.7
5	6/22/2015	4:26:55 PM	301.9
6	6/22/2015	4:27:00 PM	301.5
7	6/22/2015	4:27:00 PM	300.4
8	6/22/2015	4:26:50 PM	299.7



- CalSoft including for setting bath temperature and monitoring the PV. Graphical representations of PV/TIME with 2 hours data logging.

### MASTER SENSOR

- Reference Standard RTD Part no. TPRT- A- 300.



- NABL accredited calibration certificate - 3 point
- Operational Manual

### CARRY CASE



- Tempens makes customized carry case is a rugged, safe perfectly designed to carry our new CALsys -15/110 calibrator and different accessories.