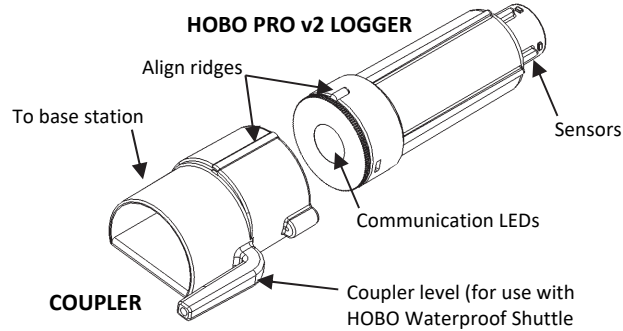
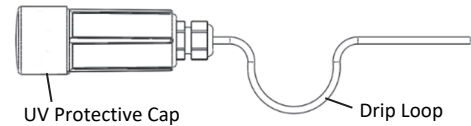


- 1 Open HOBOWare® software. (Get the latest software at [www.onsetcomp.com/hoboware-free-download](http://www.onsetcomp.com/hoboware-free-download).)
- 2 Attach the USB Optic Base Station (BASE-U-4) or HOBO Waterproof Shuttle (U-DTW-1) to a USB port on the computer (refer to the hardware manual at [www.onsetcomp.com/resources](http://www.onsetcomp.com/resources) for details).
- 3 Attach the coupler (COUPLER2-E) to the base station or shuttle, then insert the logger into the coupler with the ridge on the logger aligned with the ridge on the coupler as shown. If you are using the HOBO Waterproof Shuttle, make sure it is connected to the USB port on the computer and briefly press the coupler lever to put the shuttle into base station mode. It may take a few seconds for new hardware to be detected by the computer.

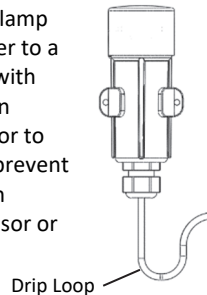


- 4 From the Device menu in HOBOWare, select Launch. Select the logging options and click Start. Logging will begin based on the settings you selected.

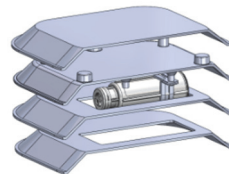
- 5 Deploy the logger. When mounting the logger, be sure the logger cable is not being pulled. Also leave about 5 cm (2 inch) of drip loop in the cable where it comes out of the logger to prevent water from entering the logger housing. A solar radiation shield is required if the logger with internal sensors or the external sensors will be in sunlight at any time. If the logger housing will be in sunlight, slide the included protective cap over the logger communication window to protect the window against UV light.



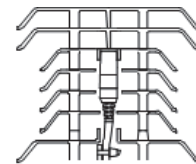
Use the included clamp to mount the logger to a surface as shown with the communication window facing up or to the side. This will prevent condensation from pooling on the sensor or cable grommet.



The U23-001 or U23-001A logger must be mounted horizontally. If the U23-001 or U23-001A logger is being deployed in a solar radiation shield, it must be mounted horizontally.



The external sensor for a U23-002 or U23-002A logger, must be mounted vertically. If the sensor is being deployed in a solar radiation shield, it must be mounted as shown.



If there are chewing rodents or other cable hazards present, the sensor cable should be protected in conduit. For full deployment and maintenance guidelines, see the manual at [www.onsetcomp.com/resources/documentation/10694-man-u23](http://www.onsetcomp.com/resources/documentation/10694-man-u23).

- 6 To read out the logger, remove it from the deployment location. Follow steps 1–3 and select Read Out from the Device menu in HOBOWare or use the Waterproof Shuttle. Refer to the HOBOWare Help for complete details on reading out and viewing data.



For more information about this logger, refer to the product manual. Scan the code at left or go to [www.onsetcomp.com/resources/documentation/10694-man-u23](http://www.onsetcomp.com/resources/documentation/10694-man-u23).