



Ultra ToF People Counter

Featuring LoRaWAN®

VS135

User Guide



Safety Precautions

Milesight will not shoulder responsibility for any loss or damage resulting from not following the instructions of this operating guide.

- ❖ Though the device is compliant with Class 1 (IEC/EN 60825-1:2014), please **DO NOT** look at the ToF sensor too close and directly.
- ❖ The device must not be disassembled or remodeled in any way.
- ❖ To avoid risk of fire and electric shock, do keep the product away from rain and moisture before installation.
- ❖ Do not place the device where the temperature is below/above the operating range.
- ❖ **Do not touch the device directly to avoid the scalds when the device is running.**
- ❖ The device must never be subjected to shocks or impacts.
- ❖ Make sure the device is firmly fixed when installing.
- ❖ Do not expose the device to where laser beam equipment is used.
- ❖ Use a soft, dry cloth to clean the lens of the device.

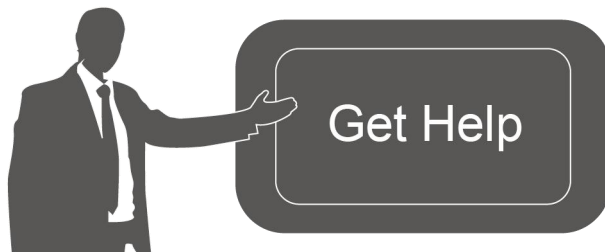
Declaration of Conformity

VS135 is in conformity with the essential requirements and other relevant provisions of the CE, FCC, and RoHS.



Copyright © 2011-2024 Milesight. All rights reserved.

All information in this guide is protected by copyright law. Whereby, no organization or individual shall copy or reproduce the whole or part of this user guide by any means without written authorization from Xiamen Milesight IoT Co., Ltd.



For assistance, please contact

Milesight technical support:

Email: iot.support@milesight.com

Support Portal: support.milesight-iot.com

Tel: 86-592-5085280

Fax: 86-592-5023065

Address: Building C09, Software Park
Phase III, Xiamen 361024,
China

Revision History

Date	Doc Version	Description
Feb. 23, 2024	V1.0	Initial version
May 20, 2024	V1.1	<ol style="list-style-type: none">1. Support to configure WLAN IP address;2. Add ToF lighting mode and noise filtering;3. Add validation record task list;4. Add Enhanced Detection Mode;5. Update installation distance.

Contents

1. Product Introduction	5
1.1 Overview	5
1.2 Key Features	5
2. Hardware Introduction	5
2.1 Packing List	5
2.2 Hardware Overview	6
2.3 Button and LED Indicators	6
2.4 Dimensions (mm)	7
3. Power Supply	7
4. Access the Sensor	7
5. Operation Guide	8
5.1 Dashboard	8
5.2 Rule	9
5.3 Communication	13
5.3.1 WLAN	13
5.3.2 LoRa	14
5.4 Report	17
5.5 Validation	18
5.6 System	21
5.6.1 Device Info	21
5.6.2 User	21
5.6.3 Time Configuration	23
5.6.4 System Maintenance	23
6. Installation Instruction	26
6.1 Installation Height	26
6.2 Covered Detection Area	26
6.3 Environment Requirements	28
6.4 Installation	28
6.5 Factors Affecting Accuracy	32
7. Communication Protocol	32
7.1 Uplink Data	32
7.2 Downlink Command	34

1. Product Introduction

1.1 Overview

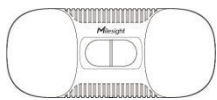
VS135 is a high-end people counting sensor that is based on deep learning AI and second-generation ToF technology. It is capable of adapting to various complex scenarios while ensuring excellent privacy protection. This sensor possesses an impressive accuracy of up to 99.8% in people counting, fully meeting your needs, and it delivers exceptional performance for both indoor and outdoor applications. With high ceiling mounting of up to 6.5m and an IP65 waterproof rating, it adapts seamlessly to any environment.

1.2 Key Features

- Up to 99.8% accuracy with the 2nd generation ToF technology and AI algorithm.
- Allow to collect more accurate people counting data by differentiating children / adults and detecting staffs via identification like staff lanyards for clearer people analysis.
- Smart U-turn detection to filter redundant counting of people wandering in the area.
- Support queuing management via dwell time detection and regional people counting.
- With radar sensor based ESG friendly working mode, it allows to experience full-speed operation when occupied while switching to a power-saving sleep mode when unoccupied.
- By incorporating 3-axis sensors for automatic height calibration, it ensures enhanced precision and guarantees accurate data analysis.
- Support automatic compensation of person height values when the device is mounted at a tilt.
- Working well even in low-light or completely dark environments with great lighting adaptability.
- Free from privacy concerns without image capturing.
- Store a million counting data locally and securely.
- Easy configuration via Wi-Fi for web GUI configuration.
- Function well with standard LoRaWAN® gateways and network servers.
- Quick and easy management with Milesight IoT Cloud.

2. Hardware Introduction

2.1 Packing List



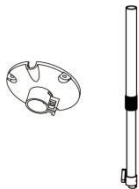
1 x VS135 Device



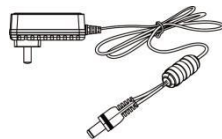
4 x Ceiling Mounting Kits



8 x Staff Tags



1 x VB01 Multifunctional Bracket Kit (Optional)



1 x Power Adapter



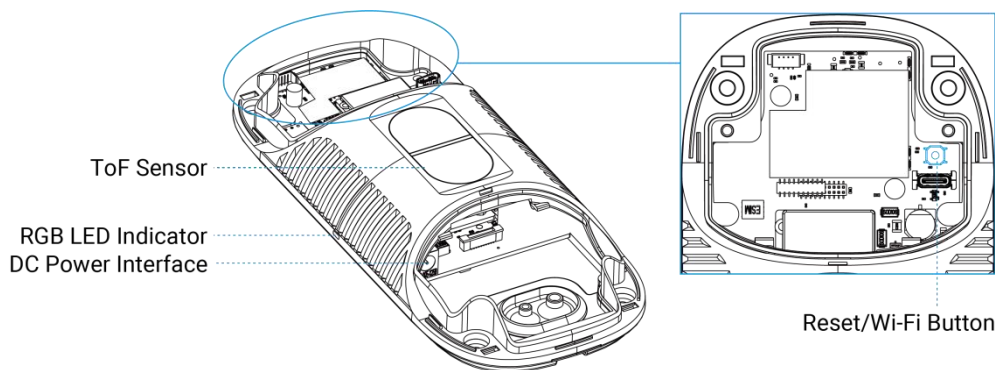
1 x Quick Guide



1 x Warranty Card

! If any of the above items is missing or damaged, please contact your sales representative.

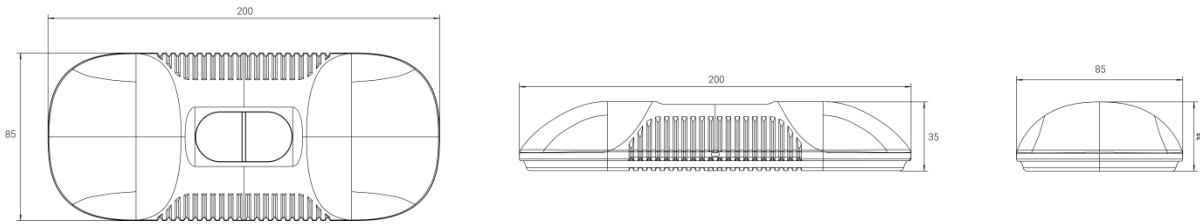
2.2 Hardware Overview



2.3 Button and LED Indicators

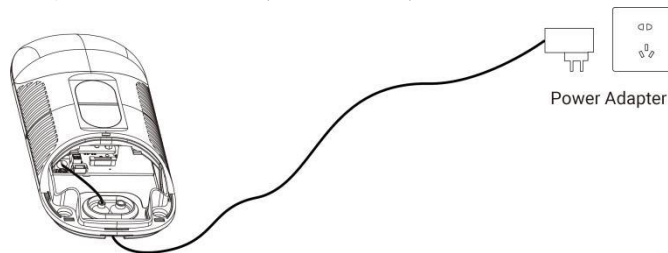
Function	Action	LED Indication
Turn On/Off Wi-Fi	Press and hold the power button for more than 3 seconds.	Turn On/Off: Blue light blinks for 3 seconds. Wi-Fi On: Blue light on. Wi-Fi Off: Green light on.
Reset to Factory Default	Press and hold the reset button for more than 10 seconds.	Green light blinks until the reset process is completed.

2.4 Dimensions (mm)



3. Power Supply

VS135 can be powered by power adapter (12V DC, 2A).



4. Access the Sensor

VS135 provides user-friendly web GUI for configuration access via Wi-Fi. Users need to customize the password when using the device for the first time. The default settings are as below:

Wi-Fi SSID: People Counter_xxxxxx (can be found on the device label)

Wi-Fi IP: 192.168.1.1

Here are the wireless method way of accessing the web GUI:

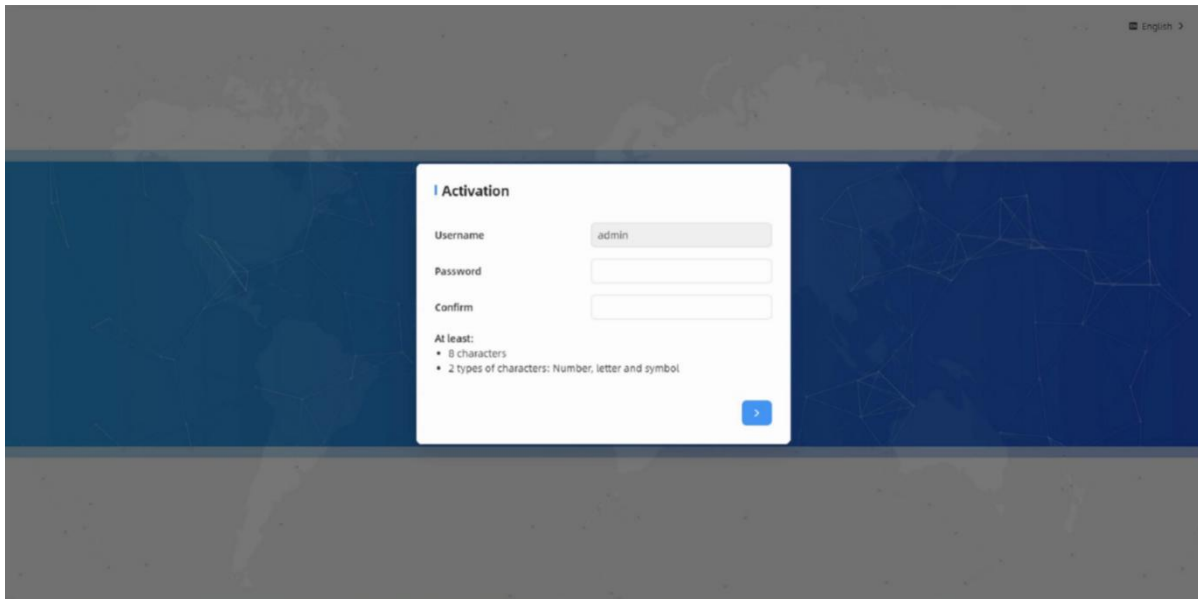
Step 1: Enable the Wireless Network Connection on your computer, search for corresponding Wi-Fi SSID to connect it, then type 192.168.1.1 to access the web GUI.

Step 2: Select the language.

Step 3: Users need to set the password and three security questions when using the sensor for the first time (three questions can be skipped by refreshing webpage). After configuration, log in with username (admin) and custom password.

Note:

- 1) Password must be 8 to 16 characters long, which contains at least two kinds or more in combination with numbers, lowercase letters, uppercase letters and special characters .
- 2) You can click the "forgot password" in login page to reset the password by answering three security questions when you forget the password if you set the security questions in advance.



English >

Activation

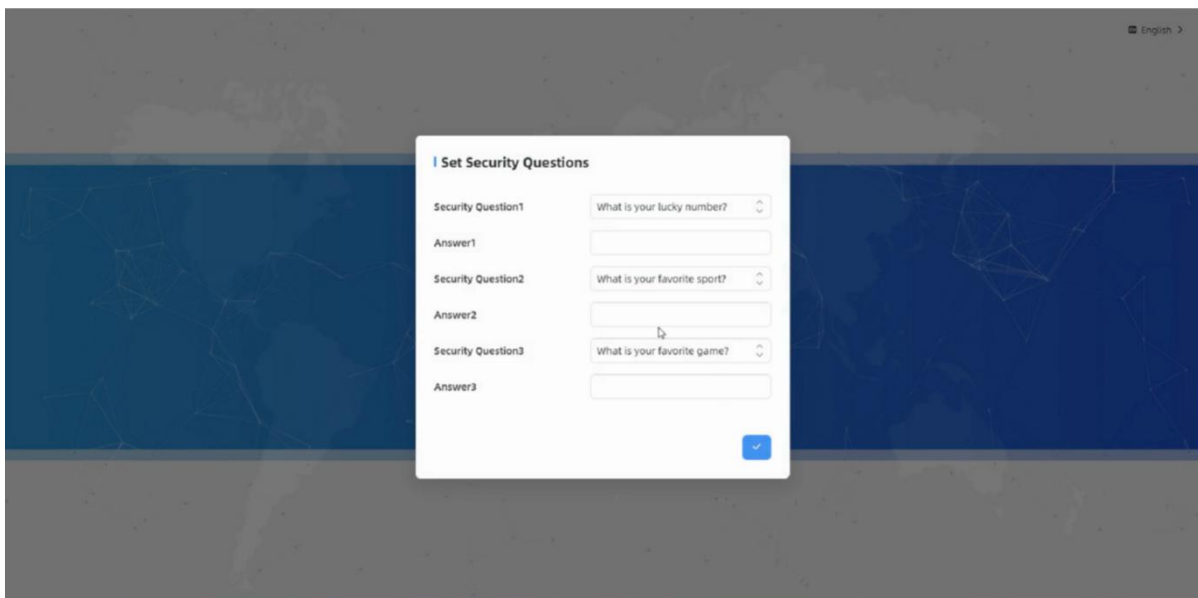
Username

Password

Confirm

At least:

- 8 characters
- 2 types of characters: Number, letter and symbol



English >

Set Security Questions

Security Question1

Answer1

Security Question2

Answer2

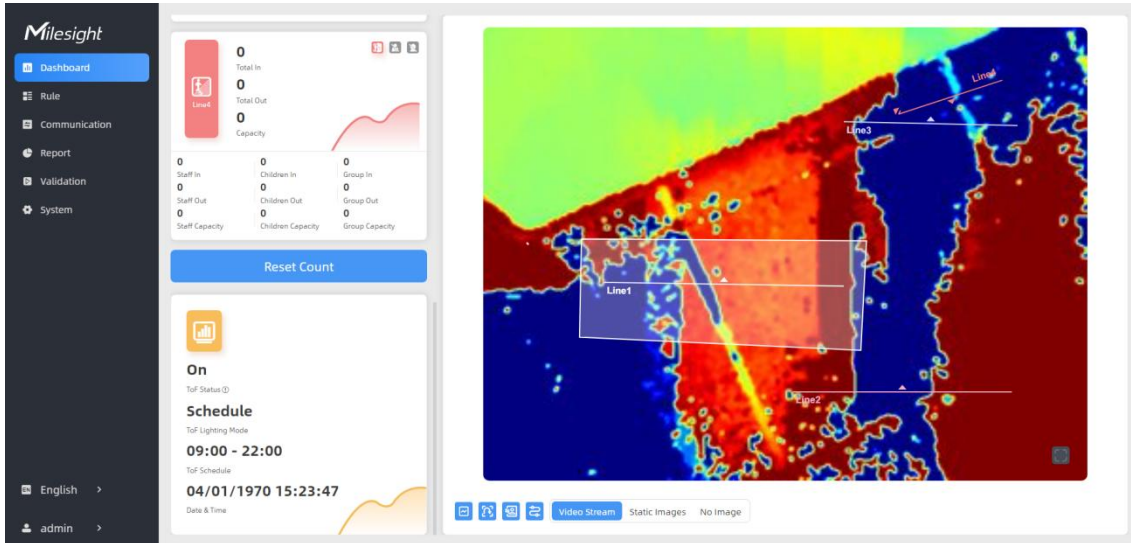
Security Question3

Answer3

5. Operation Guide

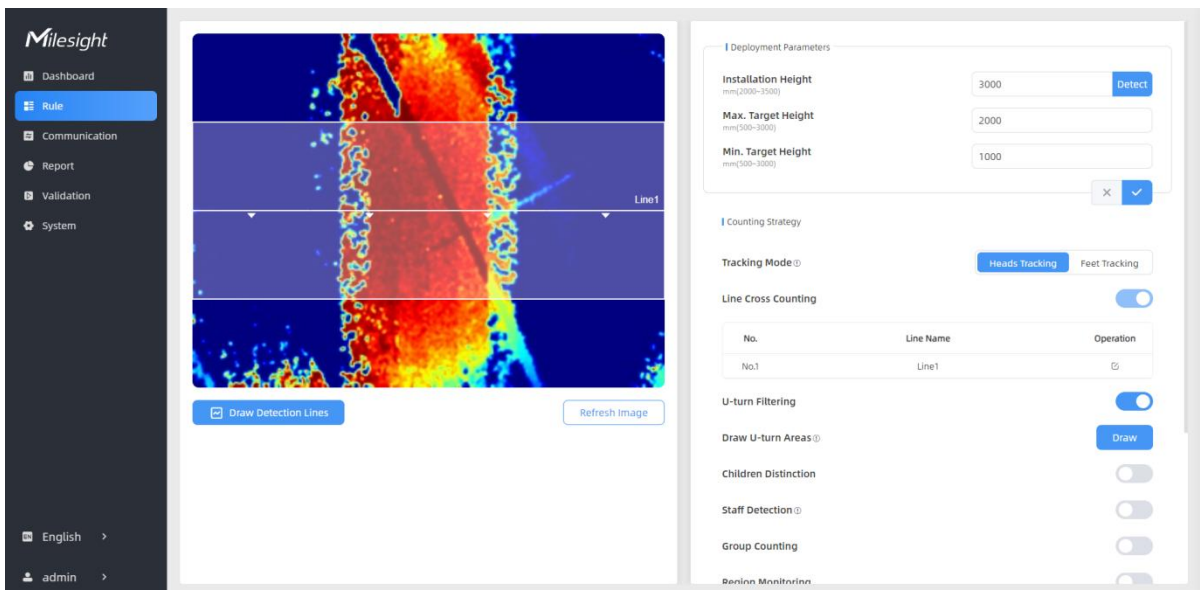
5.1 Dashboard

After logging on to the device web GUI successfully, user is allowed to view live video as following.



Parameters	Description
	Hide Capacity: Hide the total count data capacity; Staff Excluded: Exclude staff data from statistical data; Children Excluded: Exclude children data from statistical data.
Reset Count	Clear all accumulated entrance and exit people counting values.
	Click to show detection lines, U-turn areas, detection regions, tracking lines as needed.
Scence Preview	Select video stream preview, static image preview or no image preview as needed.

5.2 Rule



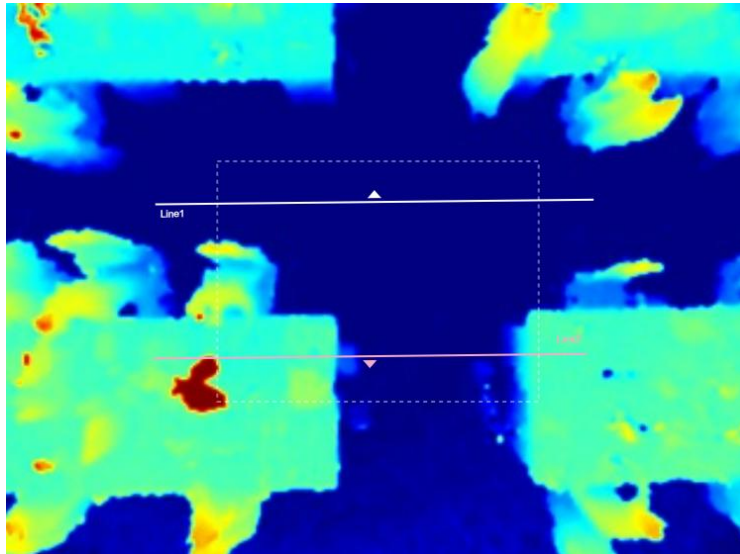
Draw Detection Lines

Users can draw detection lines to record the people count values which indicate the number of people enter or exit.

Step 1: Click **Draw Detection Lines**.

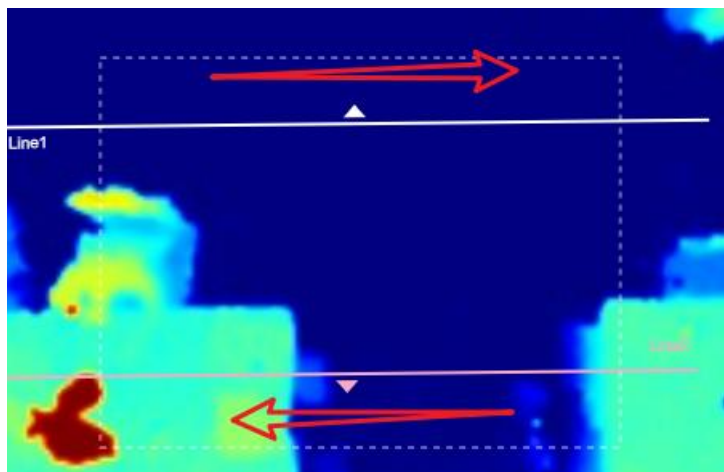
Step 2: Left-click to start drawing and drag the mouse to draw a line, left-click again to continue drawing a different direction edge, and right-click the mouse to complete the drawing. The line can be dragged to adjust the location and length. One device supports at most 4 broken lines with maximum 4 segments each.

Step3: If users need to delete the line, click **Draw Detection Lines** and select the line which need to be deleted, then click **Clear This Line** or click **Clear All**.



Note:

- 1) The arrow direction of the detection line depends on your drawing direction. If users need to flip the line, select the line which need to be flipped and click Flip Arrow Direction. And users can click Flip All to flip all detection lines.

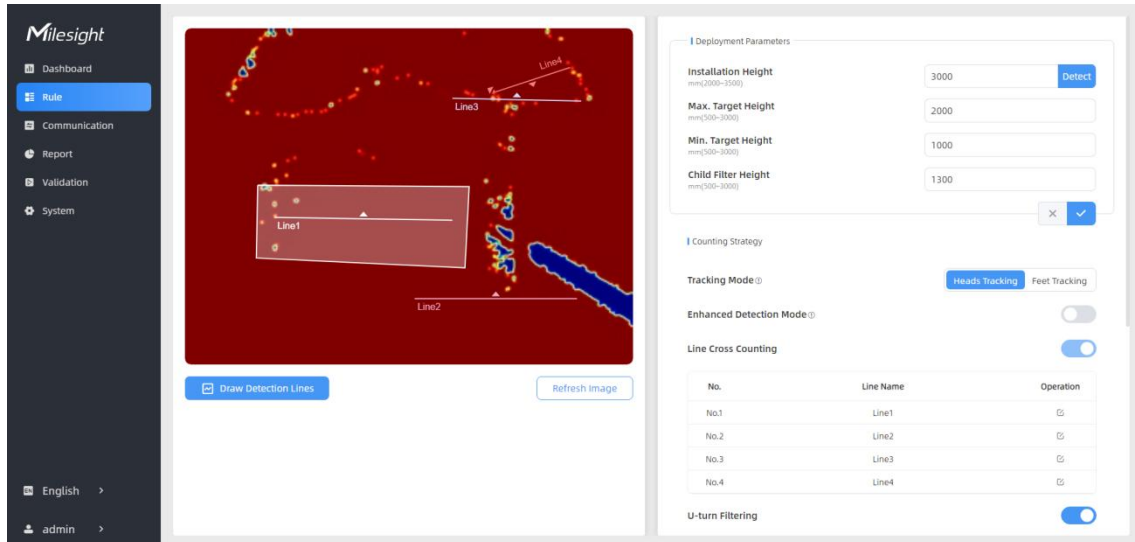


- 2) Ensure that the detected target can pass through the detection line completely. It's recommended that the detection line is perpendicular to the In/Out direction and on the center of the detection area without other objects around.
- 3) A redundant identification area needed to be left on both sides of the detection line for the target. This is to ensure that the sensor has stable recognition and tracking of this target

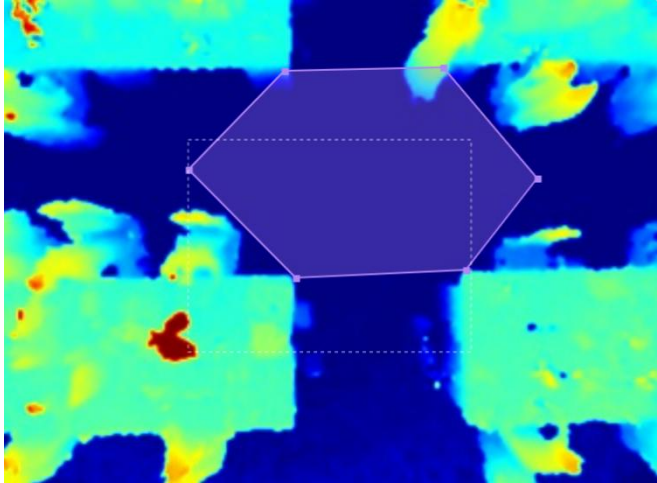
before it passes the detection line, which will make the detection and count more accurate.

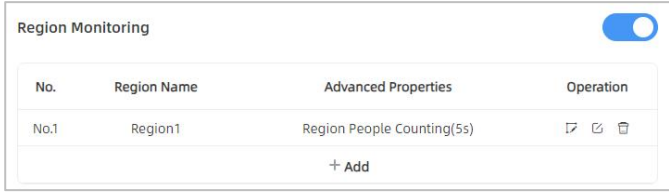
Rule Configuration

Users can set the rules to ensure accurate counting.



Parameters	Description
Installation Height	Set the device installation height. Click Detect to detect the current installation height automatically. Note: 1) Ensure that there is no object directly below the device avoiding interfering the height detection. 2) The automatic detection of the installation height is not supported with dark floor/carpet (black, grey, etc.)
Max. Target Height	Set the maximum target height, then the device will ignore the objects higher than this setting value.
Min. Target Height	Set the minimum target height, then the device will ignore the object shorter than this setting value.
Tracking Mode	Select the tracking mode of counting, including Heads Tracking and Feet Tracking. Note: It is recommended to use heads tracking mode when the installation height is low in standalone working mode.
Enhanced Detection Mode	Turn on when the depth image is abnormal, it will ensure normal counting and detecting.
U-turns Filtering	When enabled, it allows to draw an area for every line and the device will count the In and Out values only when people pass this area. Users can left-click to start the drawing and add edges for this area, then right-click to stop drawing.
Children	The device will detect the people shorter than child filter height as children.

Distinction	
Staff Detection	<p>The device will detect the people who wear reflective stripes as staff tags on the visible parts (neck, shoulders, etc.) as staffs.</p> <p>Reflective stripe requirements: width > 2cm, 500 cd/lux.m²</p>
Group Counting	<p>Click to enable the group counting function that based on the distance, moving direction and speed difference to gain deeper insights into customer' behaviors.</p> <p>Note:</p> <ol style="list-style-type: none"> 1) This function is only applicable for line cross people counting. 2) LoRa reporting only transmit group counting data when group counting function is enabled.
Region Monitoring	<p>Click "+Add" to add the region monitoring. Up to 4 regions are supported with maximum 10 segments each.</p> <p>Step 1: Draw the region monitoring areas on the screen.</p>  <p>Step 2: You can customize the zone name. And click to enable Region People Counting and Dwell Time Detection as needed. Pass-by Filtering can be set to improve statistical accuracy and Min.Dwell Time can be set to improve statistical validity.</p> <div data-bbox="443 1442 1107 1977" style="border: 1px solid #ccc; padding: 10px;"> <p>Advanced Properties</p> <p>Zone Name <input type="text" value="Region1"/></p> <p>Region People Counting <input checked="" type="checkbox"/></p> <p>Pass-by Filtering <input type="text" value="5"/> <small>s(0-3600)</small></p> <p>Dwell Time Detection <input checked="" type="checkbox"/></p> <p>Min. Dwell Time <input type="text" value="5"/> <small>s(0-3600)</small></p> <p style="text-align: right;"><input type="button" value="x"/> <input checked="" type="button" value="✓"/></p> </div> <p>Step 3: The configuration is displayed in the list after the configuration is</p>

	<p>complete. You can redraw the areas by clicking the redraw button in the list. Click the edit button to modify the advanced settings of the areas or click delete button to delete the areas separately.</p> 
Reset Cumulative Count on Schedule	<p>Enable to periodically reset cumulative count on schedule. Cumulative Count includes: Total In/Out counting of each detection line. Max./Avg. Dwell Time of each detection region.</p>
Periodic Report	Report the people counting data periodically.
Period	Set the period of reporting periodic report. Range: 1-1080 mins, default: 10 mins

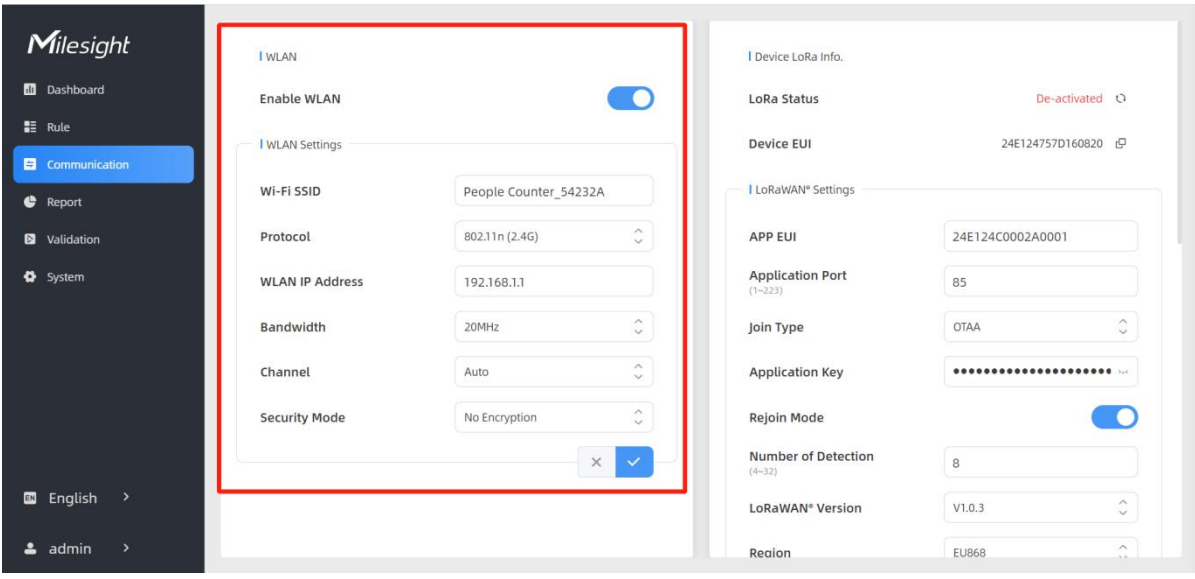
Note:

Due to the error in ToF distance measurement (0.035 m), the Max. Target Height should be set as maximum pedestrian height plus 0.035 m and the Min. Target Height as minimal pedestrian height minus 0.035 m in the actual applications. For example, if the pedestrian height is 1.6 m to 1.8 m, the Max. and Min. Target Height should be configured as 1.835 m and 1.565 m respectively.

5.3 Communication

5.3.1 WLAN

VS135 supports wlan feature to work as AP mode to configure device and it can not connect to other access point.



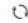
Parameters	Description
------------	-------------


Enable WLAN	Enable or disable Wi-Fi feature. If disabled, users can use button or LoRaWAN® downlink command to enable it.
Wi-Fi SSID	The unique name for this device Wi-Fi access point.
Protocol	802.11b (2.4 GHz), 802.11g (2.4 GHz), 802.11n (2.4 GHz) are optional.
WLAN IP Address	Configure WLAN IP address for web access, the default IP address is 192.168.1.1.
Bandwidth	20 MHz or 40 MHz are optional.
Channel	Select the wireless channel. Auto, 1,...11 are optional.
Security Mode	No Encryption, WPA-PSK, WPA2-PSK and WPA-PSK/WPA2-PSK are optional.
Cipher	AES, TKIP, AES/TKIP are optional.
Wi-Fi Password	Customize the password when security mode is not No Encryption.

5.3.2 LoRa







LoRa settings are used for configuring the transmission parameters in LoRaWAN® network.

Device LoRa Info.

LoRa Status Activated 

Device EUI 24E124767D511657 

LoRaWAN® Settings

APP EUI	<input type="text" value="24E124C0002A0001"/>
Application Port <small>(1~223)</small>	<input type="text" value="85"/>
Join Type	<input type="text" value="OTAA"/> 
Application Key	<input type="text" value="....."/> 
Rejoin Mode	<input checked="" type="checkbox"/>
Number of Detection <small>(4~32)</small>	<input type="text" value="8"/>
LoRaWAN® Version	<input type="text" value="V1.0.3"/> 
Region	<input type="text" value="EU868"/> 
RX2 Data Rate	<input type="text" value="DR0 (SF12, 125k)"/> 
RX2 Frequency <small>MHz(863~870)</small>	<input type="text" value="869.525"/>
Spreading Factor	<input type="text" value="SF10-DR2"/> 

Channel List

Enable	Frequency <small>MHz(863~870)</small>
<input checked="" type="checkbox"/>	868.1
<input checked="" type="checkbox"/>	868.3
<input checked="" type="checkbox"/>	868.5
<input type="checkbox"/>	<input type="text" value="867.1"/>
<input type="checkbox"/>	<input type="text" value="867.3"/>
<input type="checkbox"/>	<input type="text" value="867.5"/>
<input type="checkbox"/>	<input type="text" value="867.7"/>
<input type="checkbox"/>	<input type="text" value="867.9"/>

×
✓

| LoRa Working Mode

Confirm Mode

ADR

Parameters	Description
LoRa Status	LoRaWAN [®] network joining status of this device.
Device EUI	Unique ID of the device, which can also be found on the label.
App EUI	The Default App EUI is 24E124C0002A0001.
Application Port	The port used for sending and receiving data, default port is 85.
Join Type	OTAA and ABP mode are available.
Application Key	Appkey for OTAA mode, the default key is 5572404C696E6B4C6F52613230313823.
Device Address	DevAddr for ABP mode, the default address is the 5 th to 12 th digits of SN.
Network Session Key	Nwkskey for ABP mode, the default key is 5572404C696E6B4C6F52613230313823.
Application Session Key	Appskey for ABP mode, the default key is 5572404C696E6B4C6F52613230313823.
Rejoin Mode	Reporting interval ≤ 35 mins: the device will send a specific number of LinkCheckReq MAC packets to the network server every reporting interval or every double reporting interval to validate connectivity; If there is no

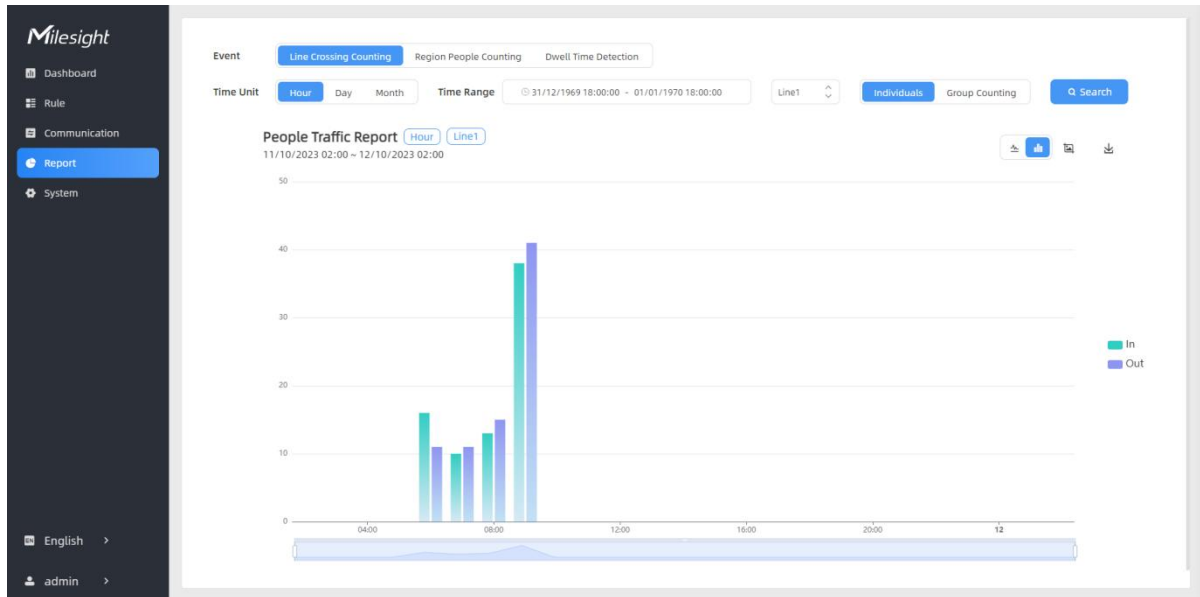
	<p>response, the device will re-join the network.</p> <p>Reporting interval > 35 mins: the device will send a specific number of LinkCheckReq MAC packets to the network server every reporting interval to validate connectivity; If there is no response, the device will re-join the network.</p>
Number of Detection	<p>When rejoin mode is enabled, set the number of detection.</p> <p>Note: the actual sending number is Number of Detection + 1.</p>
LoRaWAN® Version	V1.0.2, V1.0.3 are available.
Region	Frequency plan of this device.
RX2 Data Rate	RX2 data rate to receive downlinks.
RX2 Frequency	RX2 frequency to receive downlinks.
Spreading Factor	If ADR is disabled, the device will send data via this spreading factor.
Channel	<p>Select the channel from channel list or enter the index to select the frequency channel.</p> <p>Index examples:</p> <p>1, 40: Enabling Channel 1 and Channel 40</p> <p>1-40: Enabling Channel 1 to Channel 40</p> <p>1-40, 60: Enabling Channel 1 to Channel 40 and Channel 60</p> <p>All: Enabling all channels</p> <p>Null: Indicates that all channels are disabled</p>
Confirm Mode	If the device does not receive ACK packet from network server, it will resend data once.
ADR	Allow network server to adjust data rate of the device.

Note:

- 1) Please contact sales for device EUI list if there are many units.
- 2) Please contact sales if you need random App keys before purchase.
- 3) Only OTAA mode supports rejoin mode.
- 4) Select OTAA mode when you connect device to Milesight IoT Cloud.

5.4 Report

VS135 supports visual line chart or bar chart generation to display people traffic and supports report exporting. Before using this feature, do ensure that the device time is correct on **System** page.



Parameters	Description
Event	Select the event which you want to query the report. Line crossing counting, region people counting and dwell time detection are optional.
Time Unit	Select the unit to generate the graph or export the data.
Time Range	Select the time range to generate the graph.
Line1	Select the line to display the graph.
Individuals Groups	Select the individuals counting reports or groups counting reports.
Region1	Select the region to display the graph.
Search	Click to generate the graph according to the time range and line option.
Export	Export the historical traffic data as CSV file according to the selected time unit. The device can store up to one million data records to CSV file.
Staff Included/Excluded	Select whether to contain staff counting values on the graph.
Line/Bar	Select the display type as line or bar.
Download	Download the graph screenshot.

5.5 Validation

Video validation function can assist users in verifying the accuracy of people counting by setting up a video task of recording.

Parameters	Description
Task Name	Show the task name.
Start/End Time	Show the start time and end time of this video.
Duration	Show the length of the video.
Task Status	Show the video task status.
Operation	Click to check the video details, stop recording or delete the task.
+Add	Click to add a video task. One device can add up to 24 tasks.

Set a Task of Recording

Task Name

Recording Mode

Start Time

Duration
min(1~240)

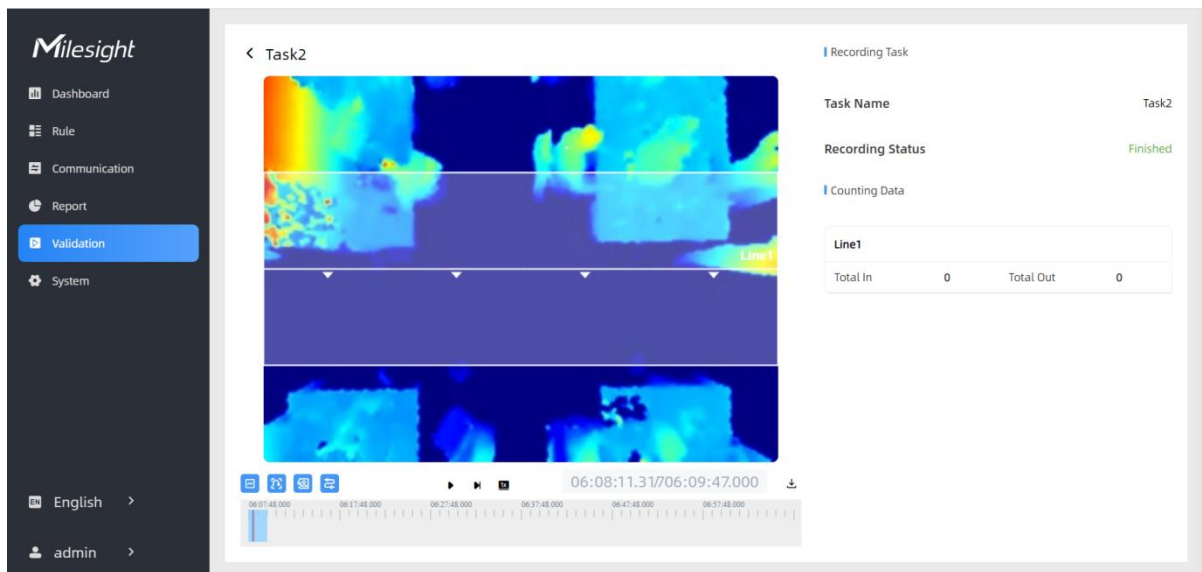
Video Quality

Parameters	Description
Task Name	Customize a name for this task.
Recording Mode	Record Now or Setting Time is optional.
Start Time	Set the start recording time.
Duration	Set the duration of the recording, the duration of all tasks should not be

	more than 240 minutes.
Video Quality	When video quality is low, the video size will be smaller and quicker to download.

Note:

- The setting time range of different tasks can not be overlap.
- Detection rules and ToF frequency parameters cannot be modified during the recording process.
- If the validation videos need to be played locally, please contact Milesight IoT support for a specialized player.



	Parameters	Description
Playback Button		Enable/Disable detection lines in the recording footage.
		Enable/Disable u-turn area in the recording footage.
		Enable/Disable detection region in the recording footage.
		Enable/Disable tracking line in the recording footage.
		Rewind/Pause/Play/Forward(supports switching between 0.5x, 1x, 2x, and 4x playback speed).
		Start time and end time of the recording.
		Download video stream footage.

Note: The playback progress bar of video stream footage highlights the video frame where the data changes.

5.6 System

5.6.1 Device Info

All information about the hardware and software can be checked on this page.

The screenshot displays the Milesight System configuration interface. On the left is a dark sidebar with navigation options: Dashboard, Rule, Communication, Report, Validation, and System (highlighted in blue). Below the sidebar are language and user selection options: English and admin.

The main content area is divided into two panels:

- Device Info:** A form with fields for Device Name (People Counter), Product Model (VS135-868M), SN (6767D51165730004), Hardware Version (V1.2), Software Version (V_135.1.0.5-r1-b), and WLAN MAC Address (24:E1:24:36:37:38). A red box highlights this section.
- Users:** A table with columns Username, User Level, and Operation. It lists an 'admin' user with 'Administrator' level and edit/delete icons. An '+ Add User' button is below the table.
- Current System Time:** Shows Date (01/02/2024) and Time (12:43:52).
- Set the System Time:** Includes a Time Zone dropdown (UTC-0:00 Western European Time (WET), Greenwich Mean Ti), a Daylight Saving Time toggle (off), and a 'Synchronize' button.
- Synchronize Time:** Shows Setting Time (01/02/2024 12:43:50) and a 'Synchronize with your computer time' button.

5.6.2 User

This screenshot is identical to the previous one, but a red box highlights the 'Users' table in the 'Device Info' section.

Parameters

Description



You can change the login password of this device.

Users modify

Username	<input type="text" value="admin"/>
User Level	<input type="text" value="Administrator"/>
Administrator Password	<input type="password"/>
New Password	<input type="password"/>
Confirm	<input type="password"/>

At least:

- 8 characters
- 2 types of characters: Number, letter and symbol



Click to set three security questions for your device. In case that you forget the password, you can click **Forget Password** button on login page to reset the password by answering three security questions correctly.

Secure Question Settings Already Set

Password	<input type="password"/>
Security Question1	<input type="text" value="What is your lucky number?"/>
Answer1	<input type="text"/>
Security Question2	<input type="text" value="What is your favorite sport?"/>
Answer2	<input type="text"/>
Security Question3	<input type="text" value="What is your favorite game?"/>
Answer3	<input type="text"/>



Click to add a viewer, who will only have access to the "Dashboard" and "Report" interfaces.

Add User

Username	<input type="text" value="viewer"/>
User Level	<input type="text" value="Viewer"/>
Password	<input type="password"/>
Confirm	<input type="password"/>

At least:

- 8 characters
- 2 types of characters: Number, letter and symbol



+ Add User

5.6.3 Time Configuration

Parameters	Description
Time Zone	Choose the time zone for your location.
Daylight Saving Time	Enable or disable Daylight Saving Time (DST). Start Time: the start time of DST time range. End Time: the end time of DST time range. DST Bias: the DST time will be faster according to this bias setting.
Setting Time	Set the device time manually.
Synchronize with computer time	Synchronize the time with your computer.

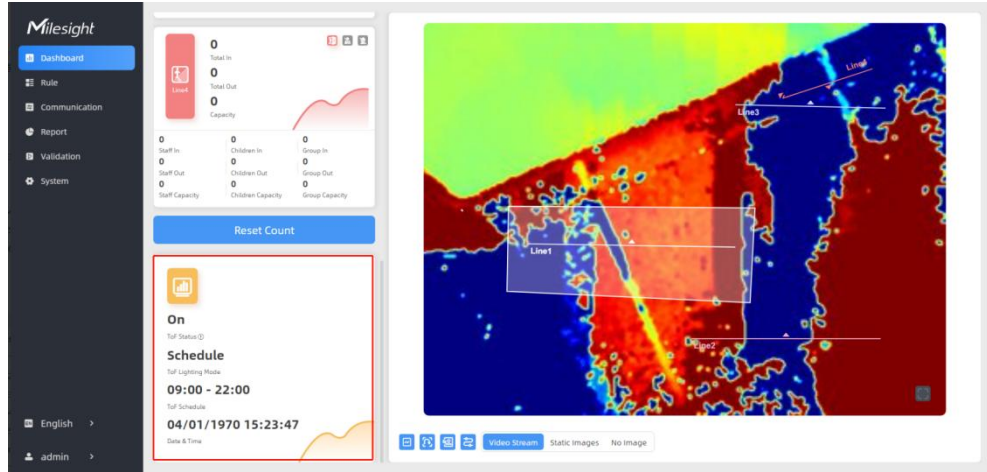
5.6.4 System Maintenance

The screenshot displays the Milesight IoT management interface. The left sidebar contains navigation options: Dashboard, Rule, Communication, Report, Validation, System (highlighted), English, and admin. The main content area is divided into two sections:

- Time of Flight Advanced Settings:**
 - Frequency Adjustment: Modulation Mode A (dropdown)
 - ToF Lighting Mode: Always On, Auto (selected), Schedule (radio buttons)
 - ToF Noise Filtering:
 - Noise Filtering Level: Slider control
 - Tilt Correction:
 - Reset:
 - Recovery device basic configuration: Basic Recovery (button)
 - Recovery device to factory settings: All Recovery (button)
 - Reboot: (button)
- Reboot:**
 - Reboot the Device: Reboot (button)
 - Upgrade:
 - Software Version: V_135.1.0.6-r1-a2
 - Upgrade Image: [File selector] Upgrade (button)
 - Explanation: The upgrade process takes 1-10 minutes, do not turn off the power. The automatic reboot will happen once the upgrade complete.
 - Backup and Restore:
 - Export Config File: Export (button)
 - Import Config File: [File selector] Import (button)

Parameters	Description
Frequency Adjustment	Adjust the ToF frequency modulation mode to avoid the interference of surrounding IR devices. Please avoid using the same mode if there are multiple VS135 devices around. Note: If there is only one option, please contact Milesight IoT support: iot.support@milesight.com
ToF Lighting Mode	Adjust the ToF light mode as Always On, Auto or Schedule. When using Auto mode, the device will turn off the ToF light when radar detects no person for some times to save the power. Note:

- 1) ToF light off will not affect the periodic report.
- 2) During validation, the ToF lighting will be fixed as On irregardless of its lighting mode configuration.
- 3) When using ToF Lighting Mode, the Dashboard will display relevant information.



ToF Noise Filtering	Filter the noisy point on the screen when working with dark floor or carpet.
Noise Filtering Level	<p>Standard Version: When installing in a spacious environment with black carpet, it is recommended to set the strength to 2; when installing in a narrow environment with black carpet, it is recommended to set the strength to 10.</p> <p>High Ceiling Mount Version: When installing in a spacious environment with black carpet: it is recommended to set the strength to 18; when installing in a narrow environment with black carpet, it is recommended to set the strength to 9.</p>
Tilt Correction	Enable to automatic compensation of person height values when the device is mounted at a tilt.
Reset	<p>Recovery device basic configuration: keep the IP settings and user information when resetting.</p> <p>Recovery device to factory settings: reset device to factory default, which needs to verify admin password.</p>
Reboot	Restart the device immediately.
Upgrade	<p>Click the folder icon and select the upgrading file, then click the Upgrade button to upgrade. The update will be done when the system reboots successfully.</p> <p>Note: The upgrade process takes about 1-10 minutes. Do not turn off the power and complete automatic restart after the upgrade.</p>
Backup and Restore	<p>Export Config File: Export configuration file.</p> <p>Import Config File: Click the file icon and select the configuration file, click Import button to import configuration file.</p>

6. Installation Instruction

Parameter definition:

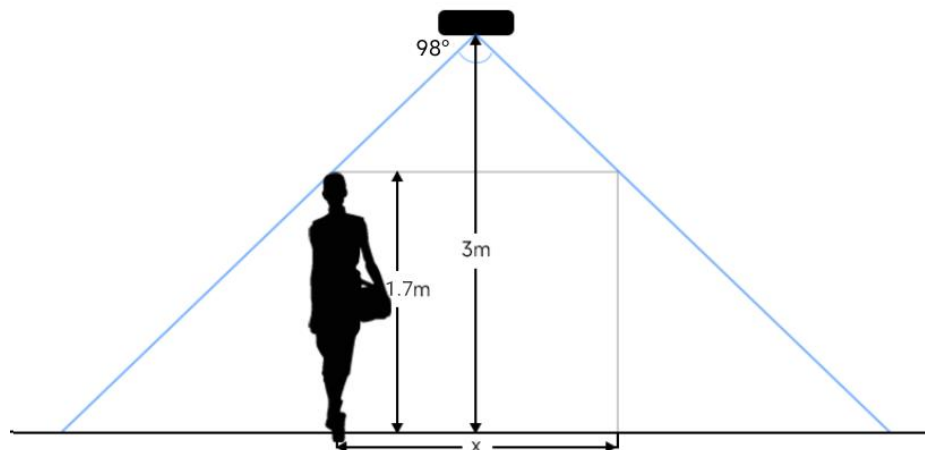
Parameters	Explanation	Value
H	Installation height	Standard Version: ≤ 3.5 m High Ceiling Mount: ≤ 6.5 m
d	Minimum detection distance of VS135	Standard Version: 0.5 m High Ceiling Mount: 2 m
Δd	Distance measurement error of VS135	0.035 m
h_{\max}	Maximum pedestrian height	Example 1.8 m
h_{\min}	Minimum pedestrian height	Example 1.7 m
α	ToF horizontal field of view angle	Standard Version: 98° High Ceiling Mount: 60°
β	ToF vertical field of view angle	Standard Version: 80° High Ceiling Mount: 45°
x	Length of detection range	
y	Width of detection range	

6.1 Installation Height

- The maximum installation height is 3.5 m and the minimum installation height is $h_{\max}+d+\Delta d$. For example, when the maximum pedestrian height is 1.8 m, then the minimum installation height is $1.8+0.5+0.035=2.335$ m.
- The maximum installation height is 6.5 m and the minimum installation height is $h_{\max}+d+\Delta d$. For example, when the maximum pedestrian height is 1.8 m, then the minimum installation height is $1.8+2+0.035=3.835$ m.

6.2 Covered Detection Area

The detection area covered by the device is related to the field of view angle of the device, the installation height and the target height. The length of the detection area is approximately $x=1.155 \times (H-h_{\min})$ and the width of the detection area is approximately $y=0.828x$ ($H-h_{\min}$).



For example, if the Minimum height of pedestrians is 1.7 m, the detection area corresponding to each installation height is as follows:

Standard Version:

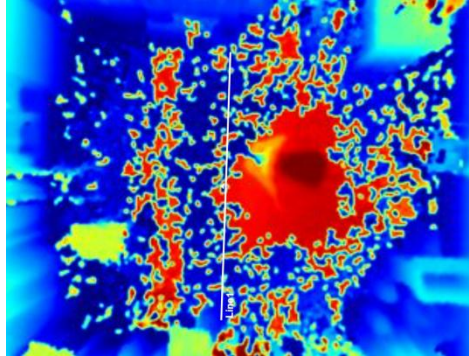
Installation Height (m)	Monitored Area (m)	Detection Area(m)
2.5	5.75 × 4.20	1.84 × 1.34
2.6	5.98 × 4.36	2.07 × 1.51
2.7	6.21 × 4.53	2.30 × 1.68
2.8	6.44 × 4.70	2.53 × 1.85
2.9	6.67 × 4.87	2.76 × 2.01
3.0	6.90 × 5.03	2.99 × 2.18
3.1	7.13 × 5.20	3.22 × 2.35
3.2	7.36 × 5.37	3.45 × 2.52
3.3	7.59 × 5.54	3.68 × 2.69
3.4	7.82 × 5.71	3.91 × 2.85
3.5	8.05 × 5.87	4.14 × 3.02

High Ceiling Mount Version:

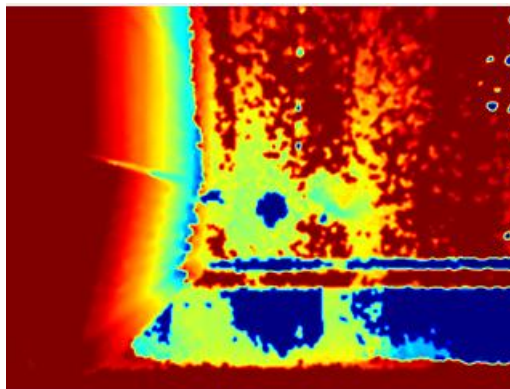
Installation Height (m)	Monitored Area (m)	Detection Area(m)
3.5	4.04 x 2.90	2.08 x 1.49
3.7	4.27 x 3.07	2.31 x 1.66
3.9	4.50 x 3.23	2.54 x 1.82
4.1	4.73 x 3.40	2.77 x 1.99
4.3	4.97 x 3.56	3.00 x 2.15
4.5	5.20 x 3.73	3.23 x 2.32
4.7	5.43 x 3.89	3.46 x 2.49
4.9	5.66 x 4.06	3.70x 2.65
5.1	5.89 x 4.22	3.93 x 2.82
5.3	6.12 x 4.39	4.16 x 2.98
5.5	6.35 x 4.56	4.39 x 3.15
5.7	6.35 x 4.72	4.62 x 3.31
5.9	6.81 x 4.89	4.85 x 3.48
6.1	7.04 x 5.05	5.08 x 3.65
6.3	7.27 x 5.22	5.31 x 3.81
6.5	7.51 x 5.38	5.54 x 3.98

6.3 Environment Requirements

- Dark floor/carpet (black, grey, etc.) will affect the device to count staffs when Staff Detection is enabled.



- Avoid 940nm light which may result in incorrect counting.
- Outdoor sunlight shining on the over channel will not have any effect, but the mirrored reflections that allow sunlight to shine on the ToF Sensor should be avoided.
- **Make sure there are no obstacles within the live view of device. Otherwise, the device imaging may appear abnormally red or it will affect people counting. When the carpet/floor is black, make sure to adjust Noise Filtering Level to max value.**

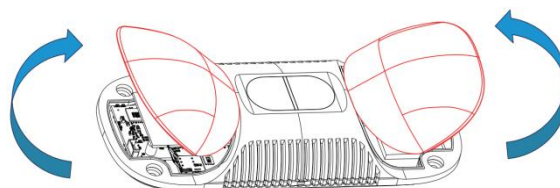


6.4 Installation

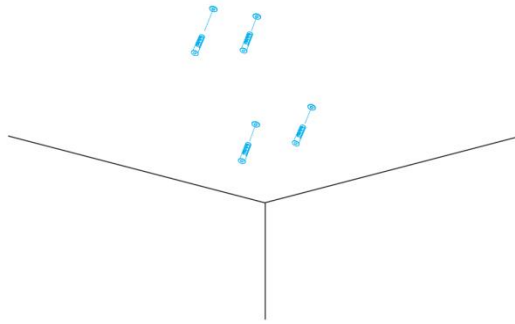
Ceiling Mount

Installation condition: ceiling thickness > 30mm.

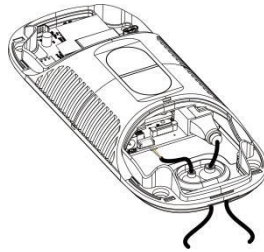
Step 1: Take down the side covers.



Step 2: Fix wall plugs into ceiling holes.



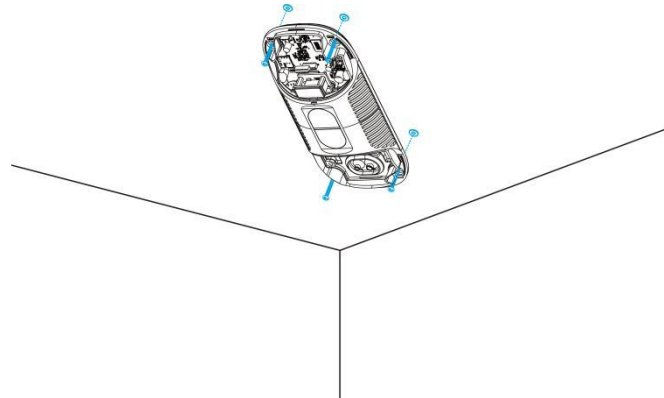
Step 3: Remove rubber plugs on the rubber sleeve, connect all required wires.



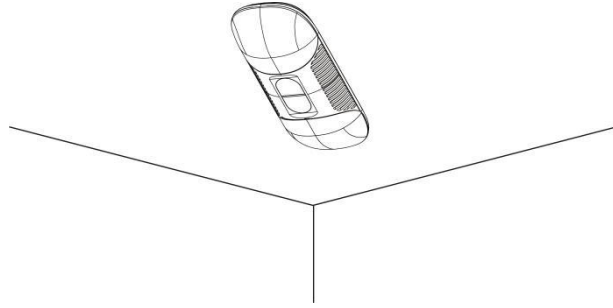
Note:

- Remove the rubber sleeve if waterproof is not required for easy installation.
- Use round wires.
- Ensure the rubber sleeve and the bottom cover are tightly connected without a gap if waterproof is required; if necessary, wrap the waterproof tapes around the wires to avoid any gap.
- Tighten the wires to avoid contact with internal modules.

Step 4: Fix the device to ceiling with mounting screws.



Step 5: Restore side covers.



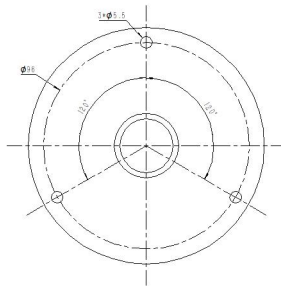
Ceiling/Lintel Mount (with Optional VB01 Multifunctional Bracket)

Step 1: Fix the pole to the device with the hole on the device.

Step 2: Adjust the length of the pole, then adjust the direction of 3-axis ball and tighten it with the handle.

Step 3: Determine the mounting location and drill 3 holes, fix the wall plugs into the mounting holes, then fix the bracket base to the wall plugs via mounting screws.

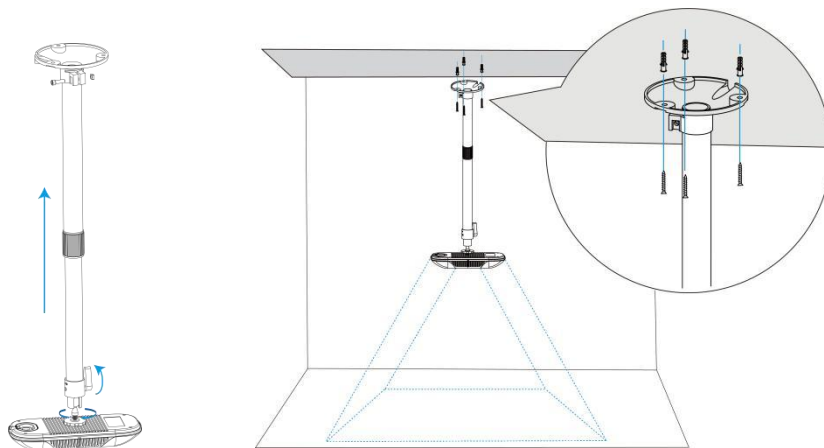
(Note: If the wire needs to be extended to the interior of the ceiling or wall, a wire hole with a suitable size is also required to be drilled.)



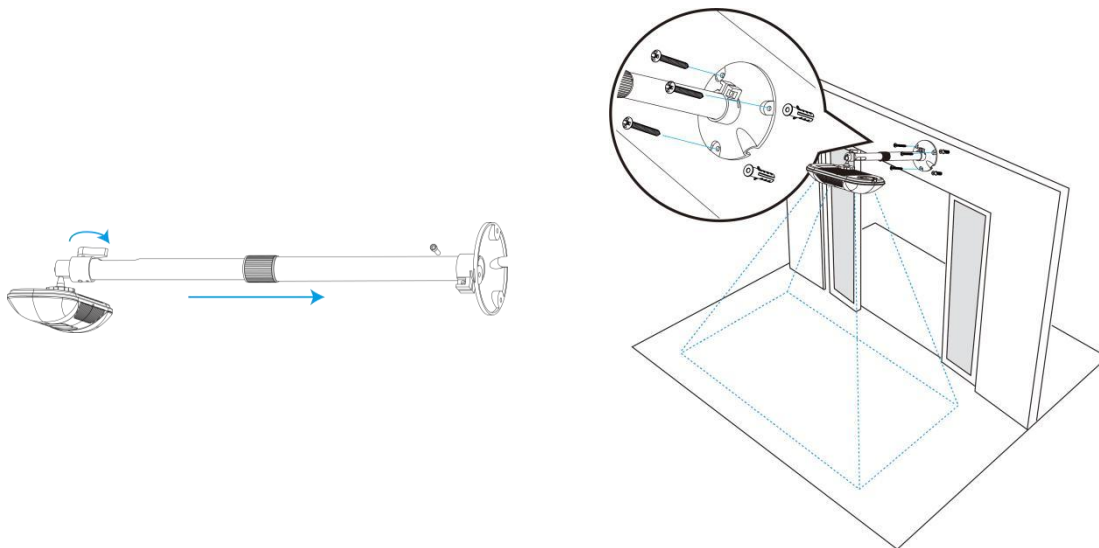
Step 4: Remove the cover on the device, and then connect all required wires and pass them through the inside of pole.

Step 5: Fix the pole to bracket base with screws and nuts.

Ceiling Mount

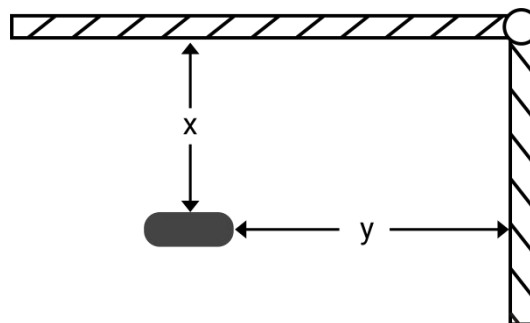


Lintel Mount



Installation Note:

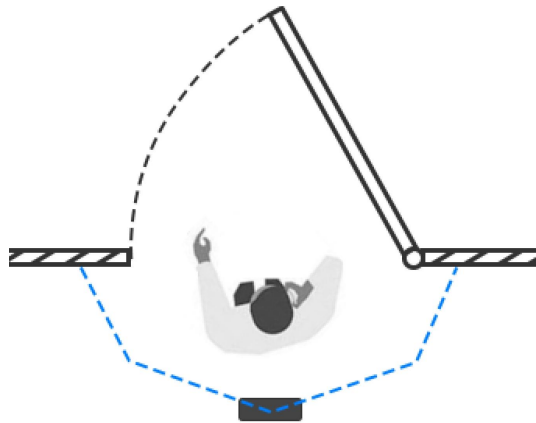
- Ensure that the ToF sensor is facing down and the tilt angle from the ground is no greater than 15° for the standard version, and no greater than 10° for the high ceiling mount version.
- Avoid direct Infrared LED light in the detection area.
- Not suggested to install the sensor close to glass or mirror.
- Ensure that there are no other objects blocking the ToF light within a 50cm radius of the device's field of view.
- Avoid installing the device against the wall and ensure the distance between the device and the wall as follows:



Condition	Standard Environment	The carpet/floor is Dark (need to set max noise filtering level)
Normal imaging	$x > 50\text{cm}, y > 60\text{cm}$	$x > 50\text{cm}, y > 75\text{cm}$
Normal counting	$x > 50\text{cm}, y > 50\text{cm}$	$x > 50\text{cm}, y > 50\text{cm}$

- When you install devices on the top of swinging doors, it is suggested to keep the door normally open. If the door must be normally closed, please install the device on the other side of the door to keep away from the door's movement. And it is suggested to keep away

from the door with a distance of at least 40cm.



6.5 Factors Affecting Accuracy

- Wearing a fisherman's hat or carrying a cardboard box on the shoulder: The target will not be recognized because it will become unlike a human in depth map.
- Handheld or cart-carrying a humanoid doll with sufficient height to pass by: The doll will be mistakenly detected as people because it is human-like in depth map.

7. Communication Protocol

7.1 Uplink Data

VS135 reports basic information of sensor once joining the network and the number of people periodically. For decoder examples please find files on

<https://github.com/Milesight-IoT/SensorDecoders>.

Channel	Type	Description
ff	01 (Protocol Version)	01=> V1
	09 (Hardware Version)	01 04 => V1.4
	16 (Device SN)	16 digits
	1f (Software Version)	85 01 00 05 => 133.1.0.5
03	d2 (Accumulated counter)	Line 1 accumulated in counter, 4 bytes
04	d2 (Accumulated counter)	Line 1 accumulated out counter, 4 bytes
05	cc (Periodic counter)	Line 1: Byte 1-2: in counter during the report interval Byte 3-4: out counter during the report interval
06	d2 (Accumulated counter)	Line 2 accumulated in counter, 4 bytes

07	d2 (Accumulated counter)	Line 2 accumulated out counter, 4 bytes
08	cc (Periodic counter)	Line 2: Byte 1-2: in counter during the report interval Byte 3-4: out counter during the report interval
09	d2 (Accumulated counter)	Line 3 accumulated in counter, 4 bytes
0a	d2 (Accumulated counter)	Line 3 accumulated out counter, 4 bytes
0b	cc (Periodic Counter)	Line 3: Byte 1-2: in counter during the report interval Byte 3-4: out counter during the report interval
0c	d2 (Accumulated counter)	Line 4 accumulated in counter, 4 bytes
0d	d2 (Accumulated counter)	Line 4 accumulated out counter, 4 bytes
0e	cc (Periodic Counter)	Line 4: Byte 1-2: in counter during the report interval Byte 3-4: out counter during the report interval
0f	e3 (Region Monitoring)	Byte 1: number of people in region 1 Byte 2: number of people in region 2 Byte 3: number of people in region 3 Byte 4: number of people in region 4
10	e4 (Region Monitoring)	Byte 1: region ID Byte 2-3: avg. dwell time Byte 4-5: max. dwell time

Note: If children distinction feature or staff detection feature is enabled, the counter uplinks will minus children and staff. For example, if children distinction is enabled, the accumulated in counter=total in counter-children in, the accumulated out counter=total out counter-children out.

Example:

1. Device information

ff0101 ff166600b09409760000 ff090102 ff1f85010001					
Channel	Type	Value	Channel	Type	Value
ff	01 (Protocol Version)	01 (V1)	ff	16(Device SN)	66 00 b0 94 09 76 00 00
Channel	Type	Value	Channel	Type	Value
ff	09 (Hardware version)	0102 (V1.2)	ff	1f (Software version)	85 01 00 01 (V133.1.0.1)

2. Line 1 People counter

03d205000000 04d203000000 05cc02000100					
Channel	Type	Value	Channel	Type	Value
03	d2 (accumulated in counter)	05 00 00 00 => 00 00 00 05=5	04	d2 (accumulated out counter)	03 00 00 00 => 00 00 00 03=3
Channel	Type	Value			
05	cc (Periodic Counter)	In: 02 00 => 00 02 = 2 Out: 01 00 => 00 01 =1			

7.2 Downlink Command

VS135 supports to configure the device via downlink commands. Application port is 85 by default.

Channel	Type	Description
ff	10 (Reboot)	ff (Reserved)
	03 (Reporting Interval)	2 Bytes, unit: s
	04 (Confirm Mode)	00: disable, 01: enable
	05 (LoRaWAN® Channel Mask)	Byte 1: Channel index range 01: 0-15 02: 16-31 03: 32-47 04: 48-63 05: 64-79 06: 80-95 Byte 2-3: indicate disable or enable via every bit, 0=disable, 1=enable
	40 (ADR)	00: disable, 01: enable
	41 (Application Port)	1 Byte, default is 85
	42 (Wi-Fi)	00: disable, 01: enable
	43 (People Counting Periodic Report)	00: disable, 01: enable
	51 (Clear the accumulated counting)	ff (Reserved)

Note: After changing any parameter of LoRaWAN® settings, the device will re-join the network.

Example:

1. Disable Wi-Fi.

ff4200		
Channel	Type	Value
ff	42 (Wi-Fi)	00: disable

2. Set AU915 or US915 channel mask as 8-15.

ff0501ff00 ff05020000 ff05030000 ff05040000 ff05050000		
Channel	Type	Value
ff	05 (Set Channel Mask)	01: Channel index 0-15, ff00 => 8-15 is enabled 02-05: Channel index 16-79, 0000 => all disabled

3. Reboot the device.

ff10ff		
Channel	Type	Value
ff	10 (Reboot)	ff (Reserved)

4. Set reporting interval as 20 minutes.

ff03b004		
Channel	Type	Value
ff	03(Set Reporting Interval)	b0 04 => 04 b0 = 1200s =20 minutes

-END-