

## Shimaden Lite

Shimaden Controllers and Shimaden Lite software working together to offer one of the most user friendly and advanced packages available.

*Distributed and Supported by*

**OneTemp Pty. Ltd.**  
[www.onetemp.com.au](http://www.onetemp.com.au)

Data Hiway

RS232 to 485 converter  
OR  
RS232 to 422 converter

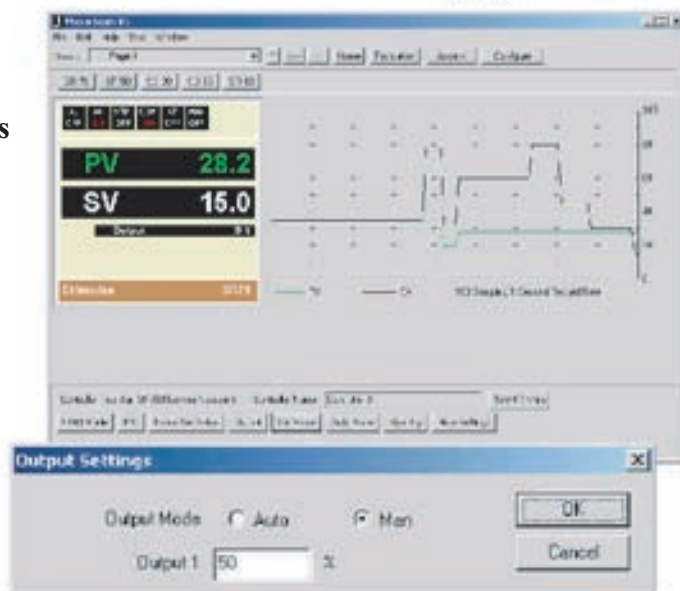
2100 IS = RS422 & RS485  
2100 NS = RS422 only



**PC**

### Shimaden Controllers/Indicators

FP21  
SR25  
SR253  
SR50  
SR73A/74A  
SR80 (RS422 not available)  
MR13 (RS422 not available)  
SD16 (RS422 not available)  
SD20  
SR90  
FP93



### Features:

- Auto seek: Find controllers automatically.
- Auto configuration: MicroScan automatically adopts controller configuration.
- User friendly controller configuration from computer.
- Password protection.
- Trend graph of PV & SV.
- Trend graph has most recent 100 scans
- Scan settings 1 sec, 15 sec, 1 min.
- Controller identification label.
- Alert window for showing status of controller events.
- CSV Report generation for viewing data in Excel.

### Note:

- MR13 has no SV facility from computer.
- 2100-IS / 2100-NS not required when using RS232.
- RS232 will connect to one controller only.